



# \* Polar Journey \* Quilt



Featuring the Polar Journey Collection by Josephine Wall  
Shipping to stores July 2021!

Finished Size: 44 ½" x 52 ½" (113.03 cm x 133.35 cm)

## Fabric Needed

### 3 Wishes Fabric® Polar Journey Collection

- 1 Panel – Polar Panel (17980-MLT-CTN-D)
- ⅝ yd – Aurora Crown (17984-BLK-CTN-D) for Piecing and Binding
- ⅓ yd – Animal Flight (17982-MLT-CTN-D)
- ¼ yd – Snowflake (17981-MLT-CTN-D)
- ¼ yd – Village (17983-MLT-CTN-D)
- ¼ yd – Ice Fantasy (17985-MLT-CTN-D)
- ¼ yd – Polar Flight (17986-MLT-CTN-D)
- 2 ¼ yds – Polar Flight (17986-MLT-CTN-D) Backing-Directional

### Additional Supplies Needed:

- 53" x 61" (106.68 cm x 137.16 cm) Cotton batting
- Piecing and sewing thread
- Quilting and sewing supplies
- Even-feed foot (optional for quilting)

# Before You Begin

Read all instructions before beginning project. Do not pre-wash fabrics. Press fabrics with a dry iron on cotton setting before cutting. Use a ¼" (6.35 mm) seam allowance and sew fabrics with right sides together (RST) unless otherwise noted. Press seams in the direction of the arrows. wof = width of fabric

## Cutting

Use a rotary cutter and acrylic ruler to cut the number of pieces from each fabric listed below.



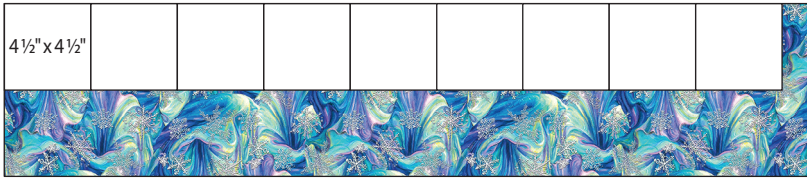
**Polar Panel (17980-MLT-CTN-D) 1 Panel**  
Fussy Cut 1 - 33 ½" x 41 ½" (85.09 cm x 105.41 cm)

2 ½" x wof							
4 ½" x 4 ½"							

**Aurora Crown (17984-BLK-CTN-D) ⅝ Yard**  
Cut 5 - 2 ½" x wof (6.35 cm x wof) Binding  
Cut 9 - 4 ½" x 4 ½" (11.43 cm x 11.43 cm)

2" x 41 ½"	
2" x 36 ½"	

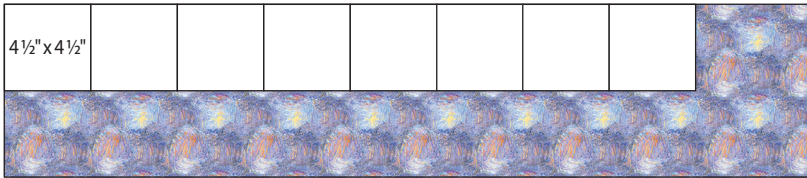
**Animal Flight (17982-MLT-CTN-D) ⅓ Yard**  
Cut 2 - 2" x 41 ½" (5.08 cm x 105.41 cm)  
Cut 2 - 2" x 36 ½" (5.08 cm x 92.71 cm)



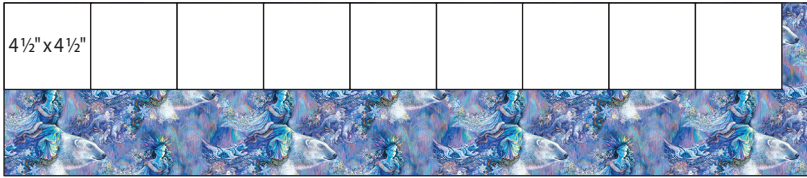
**Snowflake (17981-MLT-CTN-D) ¼ Yard**  
Cut 9 - 4 ½" x 4 ½" (11.43 cm x 11.43 cm)



**Village (17983-MLT-CTN-D) ¼ Yard**  
Cut 9 - 4 ½" x 4 ½" (11.43 cm x 11.43 cm)



**Ice Fantasy (17985-MLT-CTN-D) ¼ Yard**  
Cut 8 - 4 ½" x 4 ½" (11.43 cm x 11.43 cm)

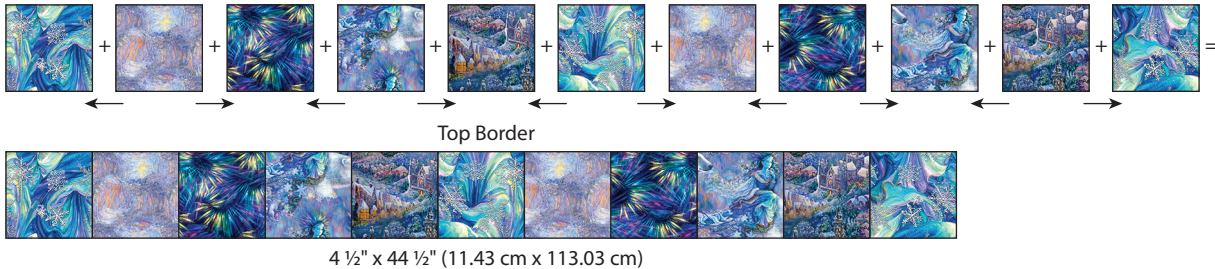


**Polar Flight (17986-MLT-CTN-D) ¼ Yard**  
Cut 9 - 4 ½" x 4 ½" (11.43 cm x 11.43 cm)

## Sewing

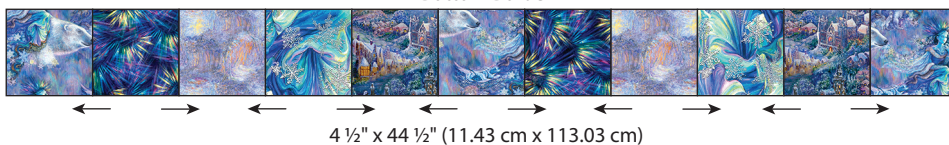
- Place two Aurora Crown, three Snowflake, two Village, two Ice Fantasy and two Polar Flight squares 4 ½" x 4 ½" (11.43 cm x 11.43 cm) as shown in Diagram A. **Note:** Check orientation of directional designs. Pin RST, sew and press to make the Top Border 4 ½" x 44 ½" (11.43 cm x 113.03 cm).

Dia. A



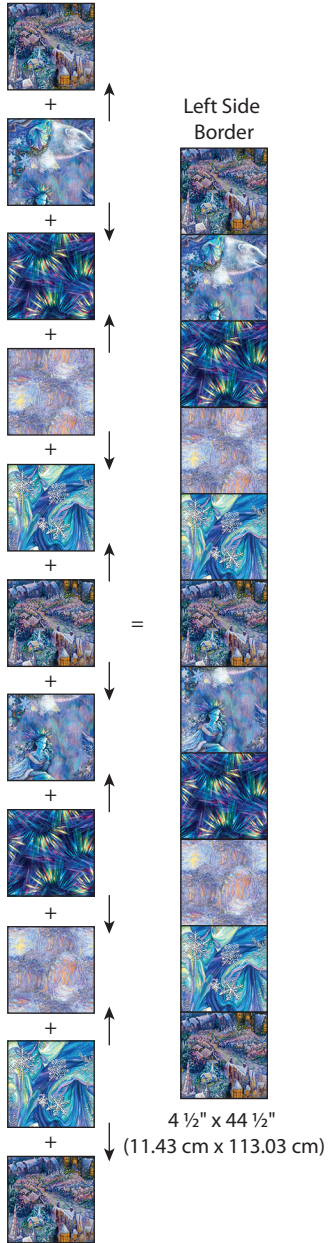
- Follow Step 1 and Diagram B using two Aurora Crown, two Snowflake, two Village, two Ice Fantasy and three Polar Flight squares 4 ½" x 4 ½" (11.43 cm x 11.43 cm) to Make the Bottom Border 4 ½" x 44 ½" (11.43 cm x 113.03 cm).

Dia. B

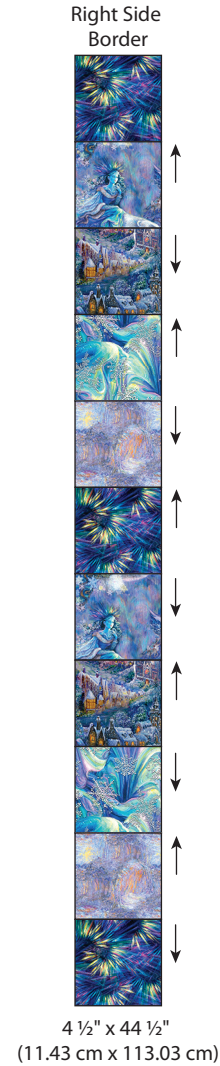


- Place two Aurora Crown, two Snowflake, three Village, two Ice Fantasy and two Polar Flight squares  $4\frac{1}{2}'' \times 4\frac{1}{2}''$  (11.43 cm x 11.43 cm) as shown in Diagram C. **Note:** Check orientation of directional designs. Pin RST, sew and press to make the Left Side Border  $4\frac{1}{2}'' \times 44\frac{1}{2}''$  (11.43 cm x 113.03 cm).
- Follow Step 3 and Diagram D using three Aurora Crown, two Snowflake, two Village, two Ice Fantasy and two Polar Flight squares, to Make the Right Side Border  $4\frac{1}{2}'' \times 44\frac{1}{2}''$  (11.43 cm x 113.03 cm).

Dia. C



Dia. D



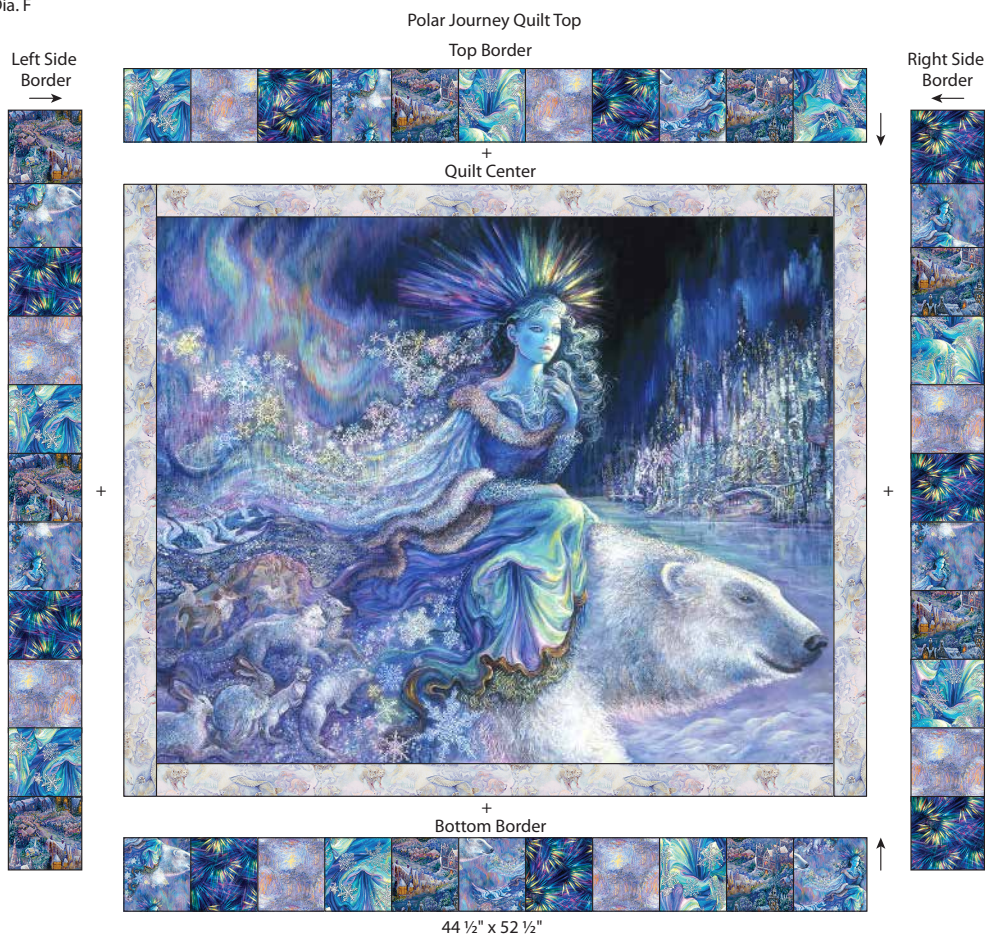
5. Place an Animal Flight strip 2" x 41 1/2" (5.08 cm x 105.41 cm) on the top and bottom of the Fussy Cut Polar Journey Panel rectangle 33 1/2" x 41 1/2" (85.09 cm x 105.41 cm) as shown in Diagram E. Pin RST matching center and ends, sew and press. Place an Animal Flight strip 2" x 36 1/2" (5.08 cm x 92.71 cm) on each side. Pin RST matching center and ends, sew and press. The Quilt Center should measure 36 1/2" x 44 1/2" (92.71 cm x 113.03 cm).

Dia. E



6. Place the Top and Bottom Borders as shown in Diagram F. **Note: Check the orientation of the borders.** Pin RST matching center and ends, sew and press. Place the Side Borders as shown. Pin RST matching center and ends, sew and press. The Polar Journey Quilt Top should measure 44 1/2" x 52 1/2" (113.03 cm x 133.35 cm).

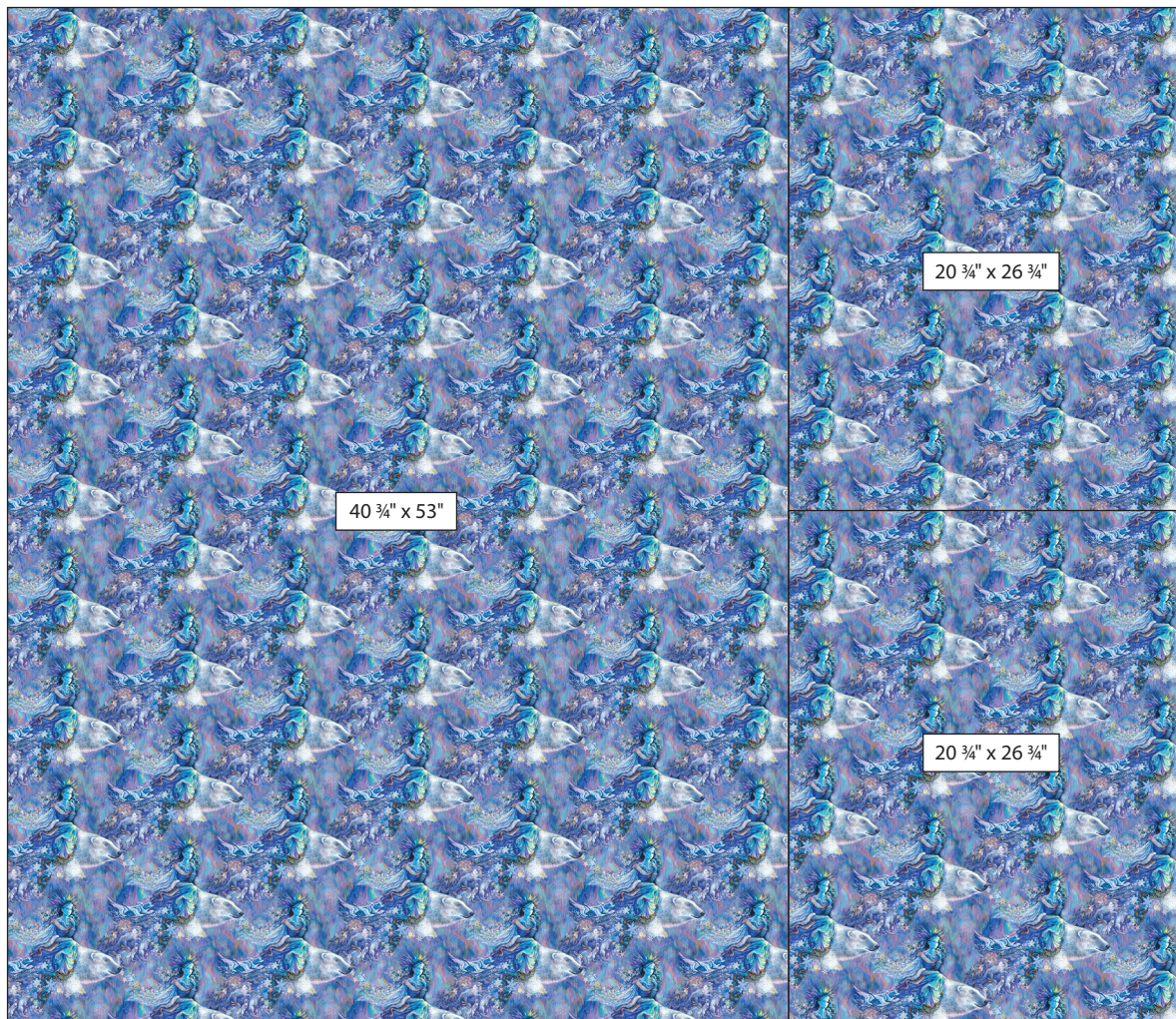
Dia. F



# Finishing

7. Remove the selvages from the Polar Flight Backing fabric. **Note:** *Fabric is directional.* Cut one piece  $40\frac{3}{4}$ " x 53" (103.51 cm x 134.62 cm) and two pieces  $20\frac{3}{4}$ " x  $26\frac{3}{4}$ " (52.71 cm x 67.95 cm). Pin the two smaller pieces RST on the short edges and sew; press. Pin the two sections RST and sew the long edges as shown in Diagram G. Press seams open or to one side. The Backing should measure 53" x 61" (134.62 cm x 154.94 cm).

Dia. G



**Polar Flight (17986-MLT-CTN-D) 2 1/4 Yards**

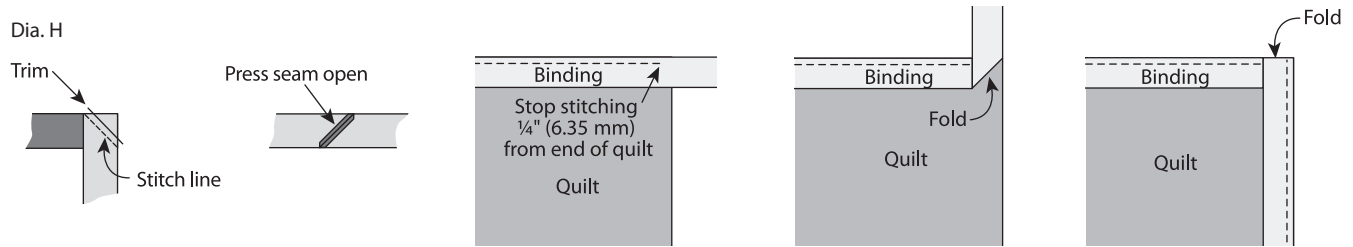
**Backing - Directional 53" x 61" (134.62 cm x 154.94 cm)**

Cut 1 -  $40\frac{3}{4}$ " x 53" (103.505 cm x 134.62 cm)

Cut 2 -  $20\frac{3}{4}$ " x  $26\frac{3}{4}$ " (52.71 cm x 67.95 cm)

8. Press finished Quilt Top and Backing. Tape the Backing, **wrong** side up, to a firm surface. Layer Batting and Quilt Top (right side up). Baste the layers together with safety pins. Quilt as desired.
9. Once quilting is complete, square up corners and edges, trimming excess Backing and Batting even with the Quilt Top.

10. **Binding** – Follow Diagram H to make the Aurora Crown Binding. Remove selvages and sew the short ends of the five 2 ½" x wof (6.35 cm x wof) strips RST end to end at a 45° angle to make one continuous strip; press seams open. Press one short end ¼" (6.35 mm) to the **wrong** side. Fold in half lengthwise with **wrong** sides together; press. Leaving a 2" (5.08 cm) tail on the folded end, place cut edges of folded Binding even with the edge of the Quilt Top and sew, mitering the corners. Overlap ends, trim any excess and finish sewing the Binding. Fold Binding over to back and hand stitch.



## Finished Care Instructions

Machine wash in cold water; gentle cycle. Do not bleach. **Tip:** Before drying, check for fabric dyes that may have run. If fabric dyes run, rewash and rinse using a color catcher to absorb loose dye. Lay flat to dry or tumble dry low.